

# RESIDENTIAL TREATMENT SYSTEMS



## WATER FORCE ONE™ HYBRID WATER SOFTENER & CARBON FILTER

Shown with  
optional  
chrome  
tank jacket.



*SWT's Water Force water conditioners follow the modern path of "green" manufacturing for water treatment by focusing on the development of multi-purpose systems. Simply, they are water softeners that do more than just soften water.*

*These are single tank, multi-chambered systems that save on energy and space, use less manufacturing materials for a single system versus traditional multiple tank installations, and require less water and salt for the cleaning cycles.*

**Water Force One (WF1)** — Chlorinated water causes a gradual reduction in a water softener's effectiveness. The carbon chamber of Water Force One removes the chlorine before it ever comes in contact with the softening resin — adding years to the life of the system.

And because the carbon bed is easily accessible and separated from the softening resin, it can be rebedded without having to replace the softening resin at the same time. (Typically, carbon should be changed out every 4 to 5 years, whereas softening resin that is protected from chlorine can last 20 to 25 years.)

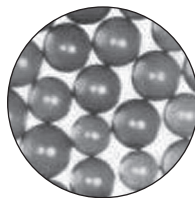
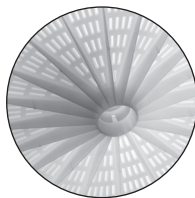
### Benefits:

- Conserves water and salt
- Lower pressure drop
- Energy efficient controller uses less than \$5.00 of electricity per year
- 100% corrosion free system
- Compact design reduces installation space
- Computerized controller monitors and adjusts to actual water usage
- Increased resin capacity
- All components NSF listed

### Product Specifications:

Control Valve . . . . . Computer metered, fully automatic  
Distribution System . . . . . Cyclonic Distributor System™ (with bottom- and mid-plate)  
Carbon . . . . . ProActive™ Coconut shell or SuperCat™ (0.75 cu.ft.)  
Softening Resin . . . . . ProSoft™ Premium, 8% crosslink (1.25 cu.ft.)

### SWT Water Force One Water Conditioners Feature...



...fully programmable "smart" control valve, efficient Cyclonic Distributor System, and high capacity ProSoft Premium resin with ProActive carbon.

| Part Number  | Carbon Type   | Softening Capacity Grains | Service Flow Rate GPM | Dual-chamber Tank |       | Brine Tank   |       | Standard Connection Size |
|--------------|---------------|---------------------------|-----------------------|-------------------|-------|--------------|-------|--------------------------|
|              |               |                           |                       | Size Inches       | Color | Size Inches  | Color |                          |
| DCP12GC07-CD | Coconut Shell | 40,000                    | 3 to 10               | 10 x 60           | Black | 15 x 17 x 33 | Black | 1 inch Brass Sweat       |
| DCP12GS07-CD | SuperCat      | 40,000                    | 3 to 10               | 10 x 60           | Black | 15 x 17 x 33 | Black | 1 inch Brass Sweat       |

10 year warranty on mineral tank, 5 year warranty on valve.

Units include brine well, safety brine valve assembly with air check, brine tank overflow, upper screen, brine line tubing & connectors. Bypass valve optional. Chrome tank jacket optional.